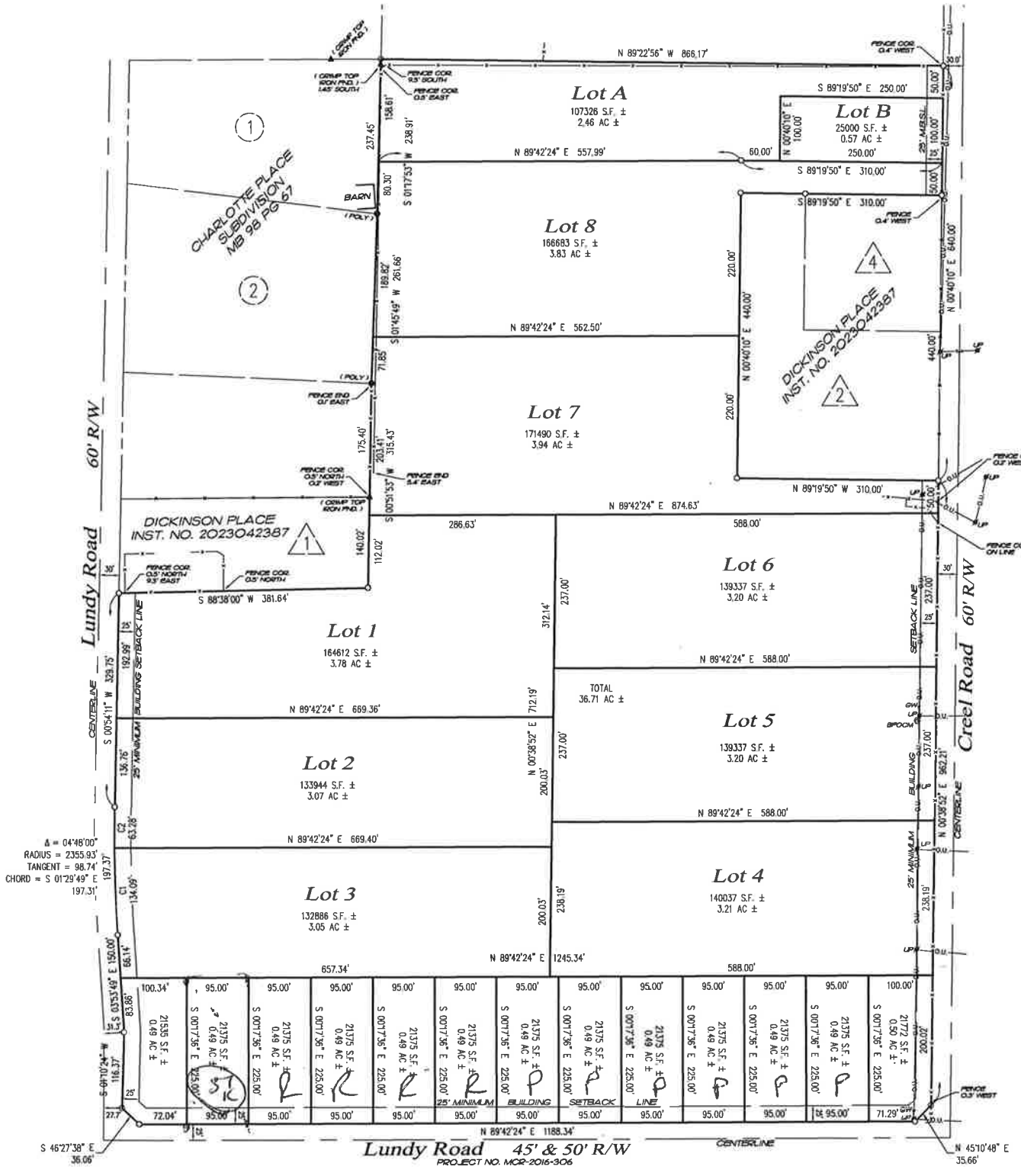


Theodore Crossings Phase I - II



CURVE	DELTA ANGLE	ARC LENGTH	RADIUS	TANGENT	CHORD BEARING	CHORD LENGTH
C1	00°31'54"	134.09'	2355.93'	67.06'	N 02°15'59" W	134.07'
C2	00°13'20"	63.28'	2355.93'	31.64'	N 00°08'01" E	63.27'